


Community Board 14 Presentation
April 12, 2011



Rockaway Park
Former Manufactured Gas Plant Site
Rockaway Park, Queens, New York

Introductions

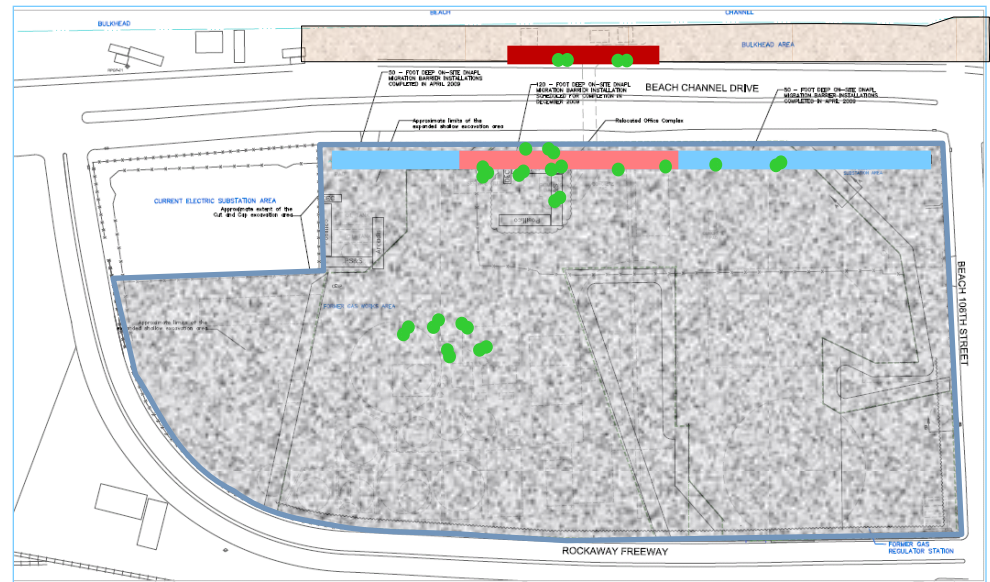
- ◆ Douglas MacNeal – NYSDEC – Project Manager
- ◆ Thomas Campbell – National Grid - Project Manager
- ◆ Matt O’Neil – GEI Consultants, Inc.
 - ◆ Performed the Remedial Investigation
 - ◆ Feasibility Study
- ◆ Janos Szeman – Paulus Sokolowski and Sartor, Engineering, P.C.
 - ◆ Engineer of Record

Presentation Outline

- ◆ Overview of the Site Remedy
- ◆ Remedial Activities Completed
 - ◆ Excavation (Completed Site-Wide)
 - ◆ On-Site NAPL Migration Barrier Wall (65 ft deep)
 - ◆ Site-Wide Cap Construction (80% Complete)
- ◆ Remedial Activities Remaining
 - ◆ On-Site NAPL Migration Barrier Wall (65-120 ft)
 - ◆ Off-Site NAPL Migration Barrier Wall (Bulkhead)
- ◆ Site Controls
- ◆ Questions

Site Remedy from NYSDEC Record of Decision

- ◆ Excavate Visible MGP Tar to 8 Feet Below Grade
- ◆ Install On-Site and Off-Site NAPL Migration Barrier Walls at Various Depths
- ◆ Install DNAPL Recovery Wells
- ◆ Install a Two-Foot Thick Soil Cover Across the Site
- ◆ Develop a Site Management Plan
- ◆ Environmental Easement to Ensure Long Term Maintenance and Protection of Remedy
- ◆ Annual Certification of the Institutional and Engineering Controls



Rockaway Park Former MGP – Aerial 2010



Remedial Activities Completed

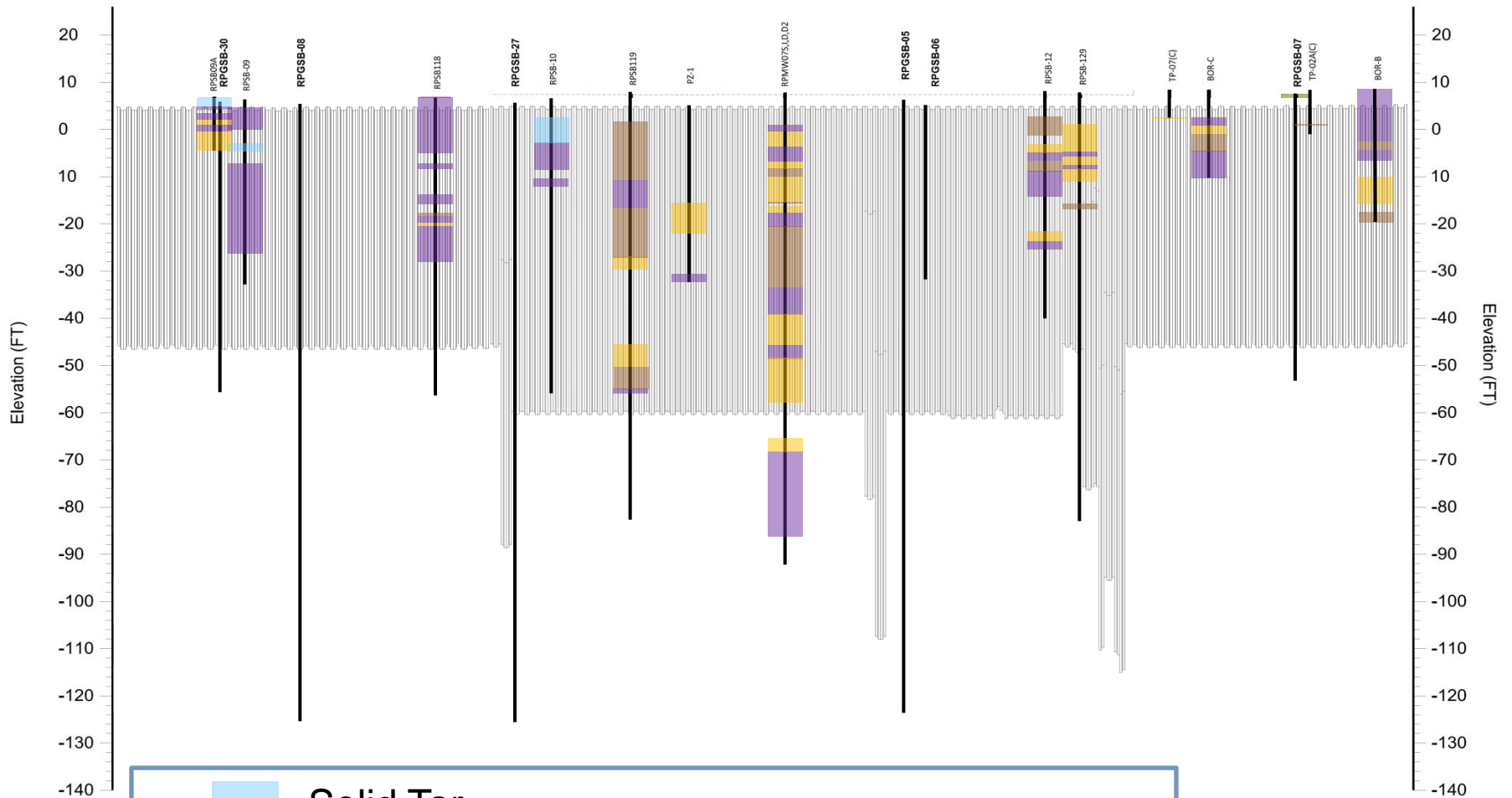
- ◆ **Excavation Completed – September 2010**
 - ◆ Removed 118,000 Cubic Yards of Contaminated Soil
- ◆ **On Site DNAPL Migration Barrier (0-65 ft)**
 - ◆ Installed 37,000 Square Feet of the On-Site Steel Sheet Pile Barrier Wall to a Depth of 65 Feet
- ◆ **Site-Wide CAP**
 - ◆ Construction Completed over 80% of Site

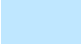





Remedial Activities Remaining

- ◆ **On Site DNAPL Migration Barrier:**
 - ◆ Install 15,000 Square Feet of the Deep Section of the (60-120 ft) of the On-Site Barrier Wall
 - ◆ Complete Site-Wide Cap
- ◆ **Off Site DNAPL Migration Barrier:**
 - ◆ Complete Remedy in City Owned Bulkhead Area
- ◆ **Install DNAPL Recovery Wells**

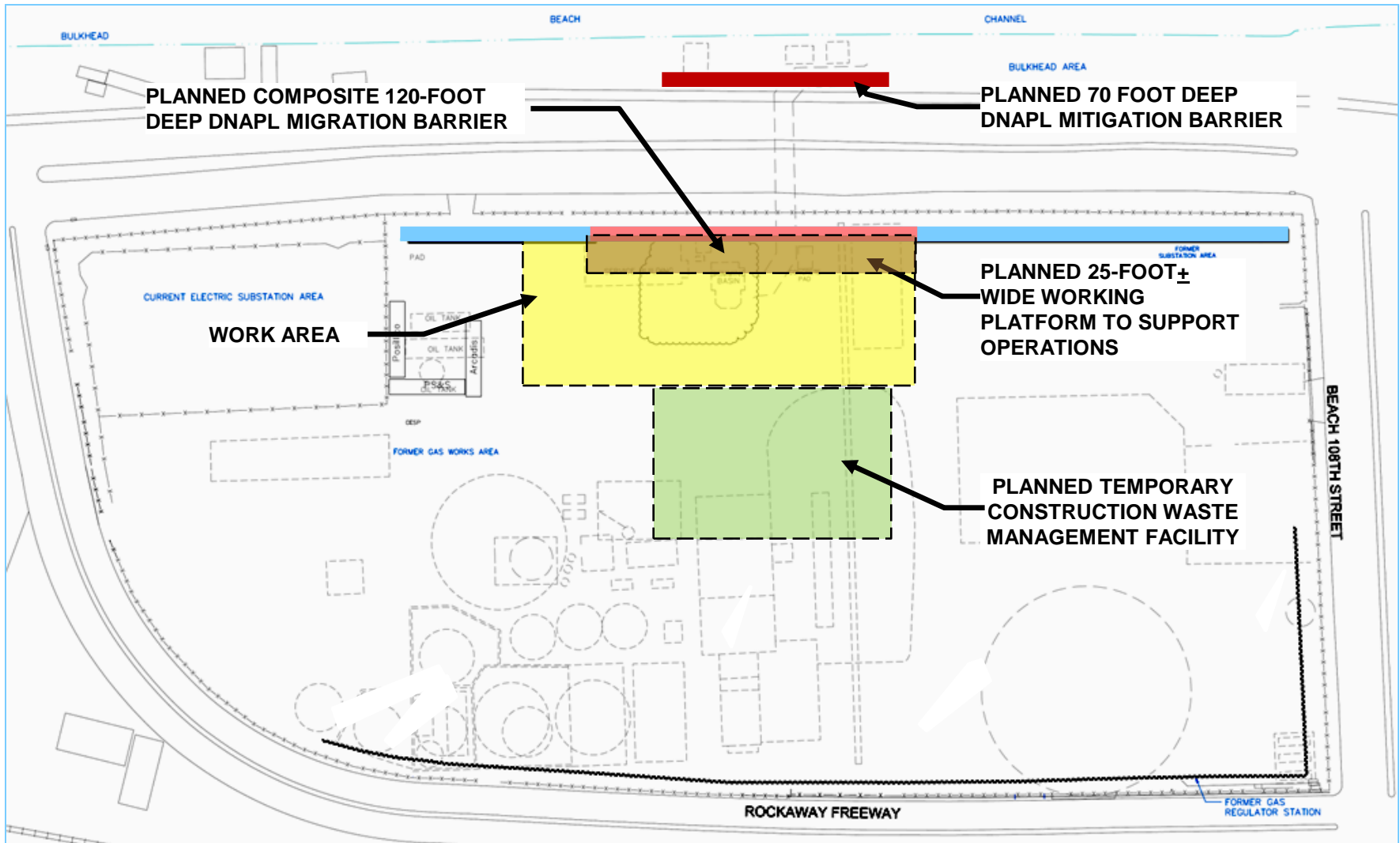
On Site DNAPL Migration Barrier



-  Solid Tar
-  Tar Saturated
-  Blebs, Globes, Lenses Grain-coating, Sheens
-  Staining



Remaining Work Areas



Soil-Cement Wall Installation

- ◆ NYSDEC-Approved Field Change Request-06A
 - ◆ Overlapping Jet Grouted Columns that Join with Waterloo Barrier
 - ◆ Construction of 120-Foot Deep Jet Grouted Columns
- ◆ Proven Technology at Depths Greater than 100-Feet
- ◆ Installed in 2009 as Remedy at the National Grid Clifton OU-1 Site; Successfully Evaluated by NYSDEC 2010

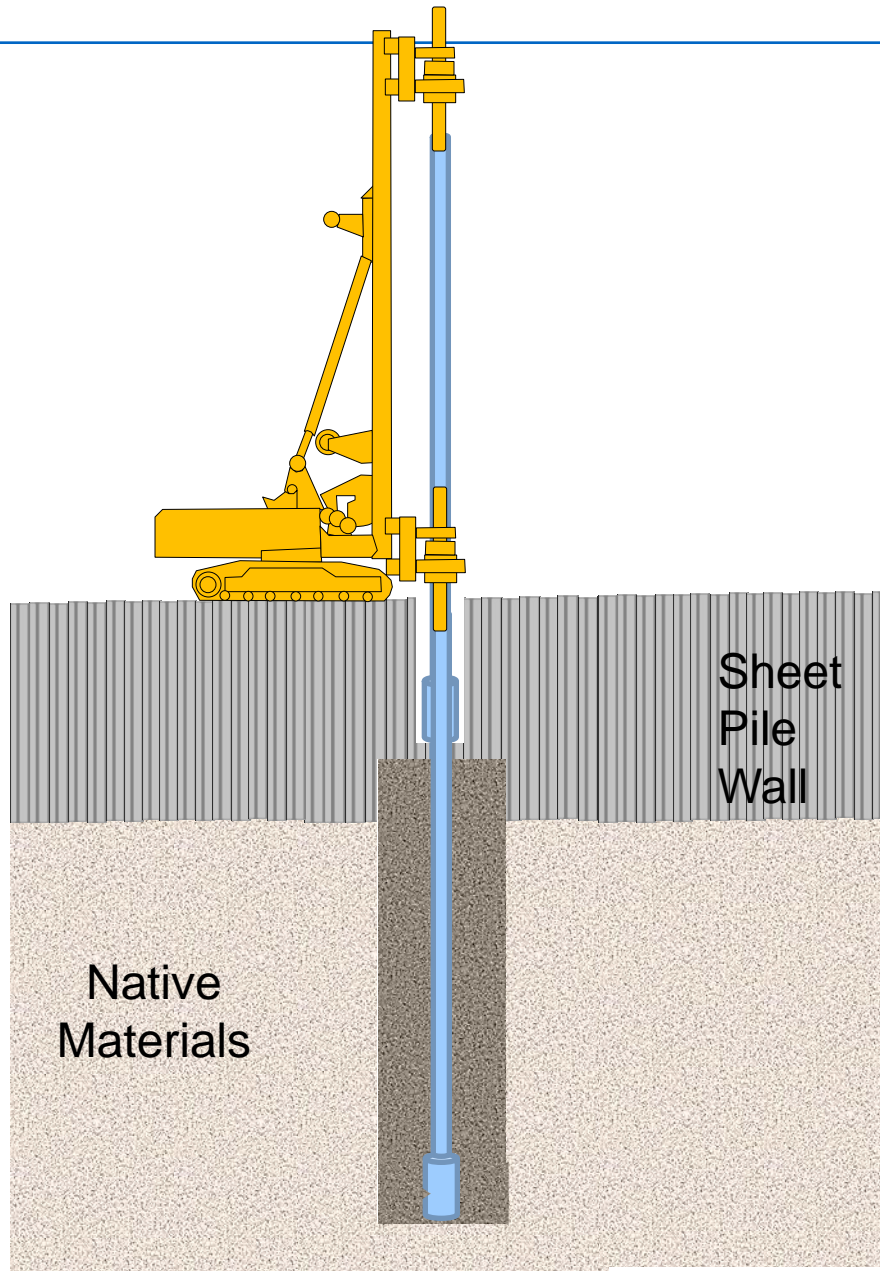
Soil-Cement Wall Installation

- ◆ Jet Grouting System

- ◆ Drilling Equipment (Drill Rig with Mast and Drill Rods, Closed Loop Waste)
- ◆ Grout Plant (Material Silos, Mixers, and Pumps)

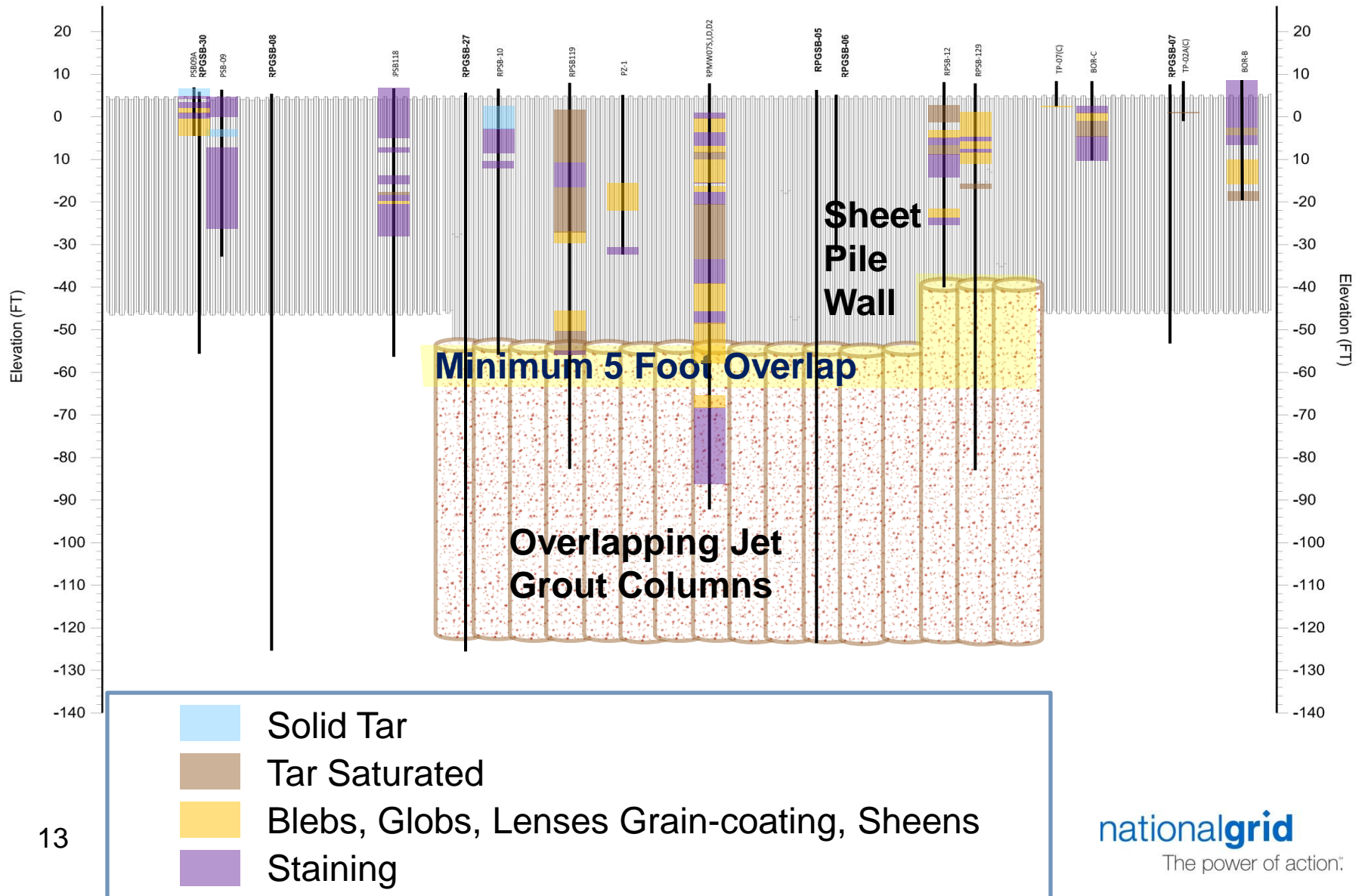


Jet Grout Column Installation



- ◆ Jet Grout Column Installed from Bottom Up
- ◆ Boring Advanced to 120 Feet
- ◆ Injection of Cement Grout into Soil Formation
- ◆ Column Overlaps Sheet Pile Wall (Minimum of 5 Feet)
- ◆ Excess Groundwater/Soil Pumped to Waste Management Facility

Proposed Soil-Cement Barrier Wall

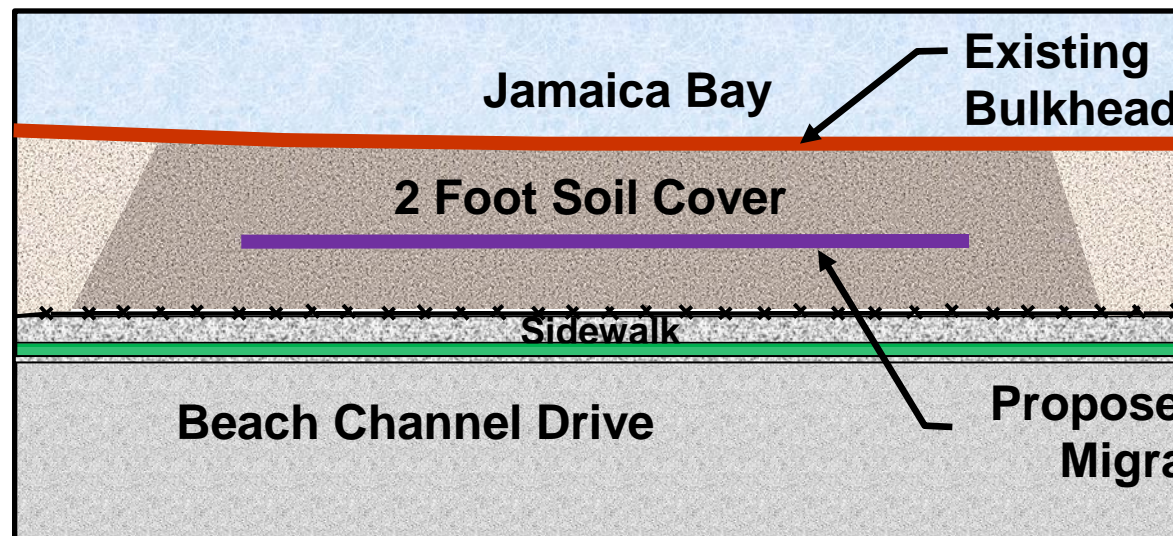
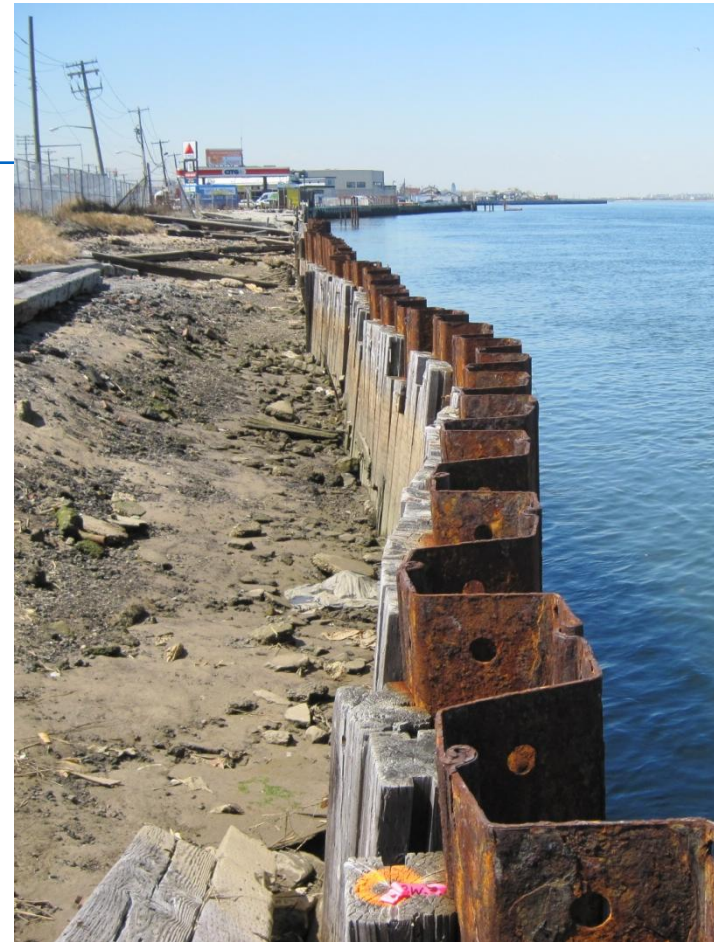


Site Controls

- ◆ Full Time NYSDEC Representative
- ◆ Labor Force is Trained and Certified
- ◆ Community Air Monitoring Plan - 24/7
- ◆ Tent Equipped with a Vapor Management System
- ◆ Waste Slurry is Enclosed from Rig to the Waste Handling Facility
- ◆ Established Trucking Procedures: Lined - Foamed - Weighed -Tarped – Decontamination Station
- ◆ Dust Suppression Methods
- ◆ 24/7 Site Security

Off-Site DNAPL Barrier

- ◆ Existing Conditions Survey performed in April 2010
- ◆ Bulkhead Area Stabilization Required Prior to Remediation
- ◆ NYSDEC-Approved Remedial Design
 - ◆ Two-Foot Thick Site Wide Cap
 - ◆ 70-Foot Deep DNAPL Migration Barrier Wall
 - ◆ DNAPL Recovery Wells



Proposed 70-Ft DNAPL
Migration Barrier

nationalgrid

The power of action.

Project Schedule - 2010-2011

◆ On- Site Activities –

- ◆ Design of Jet Grout Columns – August –December 2010
- ◆ Contractor Selection – January 2011 to Present
- ◆ Contractor Mobilizes – One Month from Award of Contract
- ◆ Jet Grout Column Construction – Estimated Four to Six Month Duration
- ◆ Site Restoration - Estimated One Month Duration
- ◆ Contractor Demobilizes - Estimated One Month Duration

◆ Off- Site Activities

- ◆ Complete Remedy in City Owned Bulkhead Area - To be Scheduled

Hotline - Website Reminder

- ◆ Questions or Concerns about the work

Call the National Grid Hotline at:

718-403-3400

- ◆ Website: rockawayparkmgpsite.com

- ◆ NYSDEC Project Manager Douglas MacNeal

(518) 402-9564